

Detecto

Distal Cap



PRMEDICAL

PROMOTING INNOVATION



PRMEDICAL

High-quality endoscopy with Detecto

Detecto is a **distal cap** that facilitates endoscopic therapy. The cap helps **maintain** adequate **depth of the field of vision** of the endoscope, gently **stretch** the folds inside the colon and **improve visibility** during colonoscopy screening procedures.

“Adenoma detection rate should be used as a measure of adequate inspection at screening or diagnostic colonoscopy in patients aged 50 years or more”¹

“Adenoma detection rate, derived from screening examinations, is recommended as a measure of the quality of colonoscopic examination”²

The gradually diminished width of the arms profile makes them more flexible and prevents damage to the membrane

Short Cap for improved Polyp Detection³

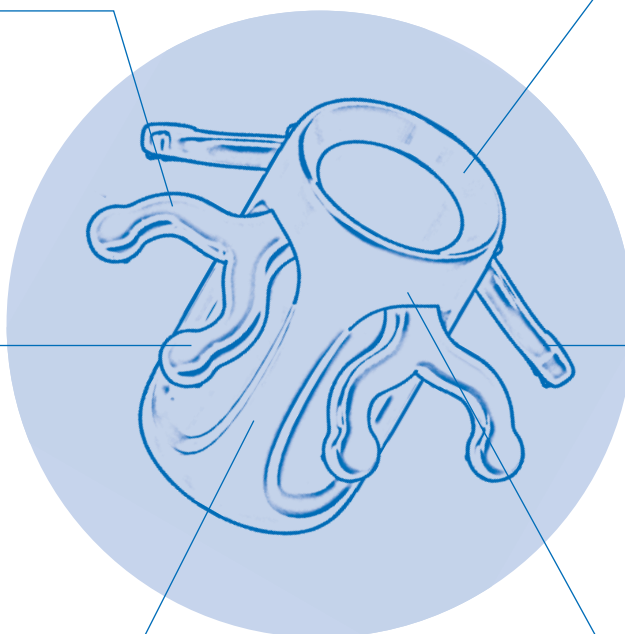
The double arm maintains Detecto in an open position during extraction and helps gently follow the anatomy of the lumen

Cap helps in deflecting and flattening the mucosal folds and prevents red-out⁴

Soft medical silicone for maximum efficiency without damage

Small profile to guarantee minimal increase in thickness

Upper lock to limit interference of the arms in the camera's field of vision



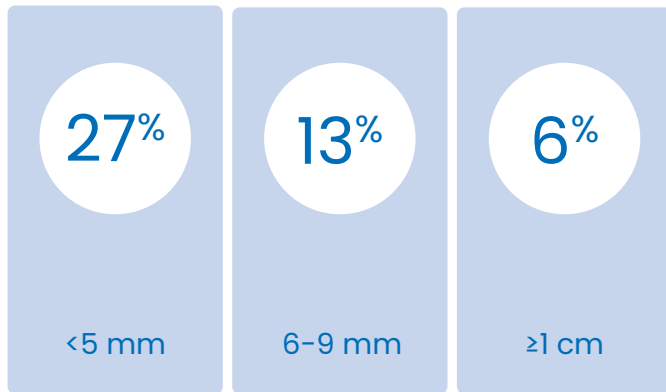
“ADR is the most important measure of the quality of colonoscopy performance”⁵

Detecto is designed also to facilitate the progress of the instrument through the gastrointestinal tract and to stabilise the tip of the instrument inside the colon to offer more stable vision.

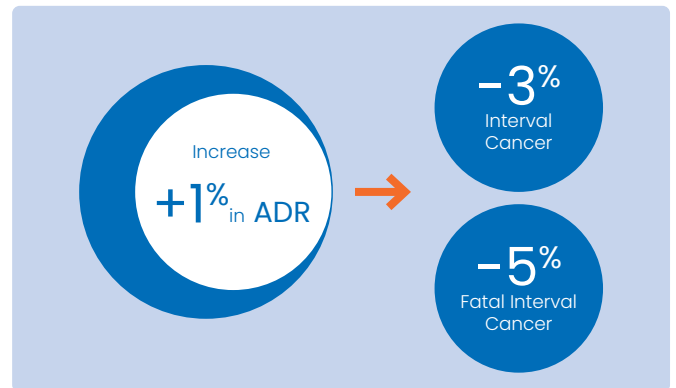


PRMEDICAL

The overall miss rate for adenomas is 24%:
27% for adenomas \leq 5mm, 13% for adenomas 6-9 mm,
and 6% for adenomas \geq 1 cm ⁶



ADR has been inversely associated with the risk of interval CRC⁷ and CRC death²



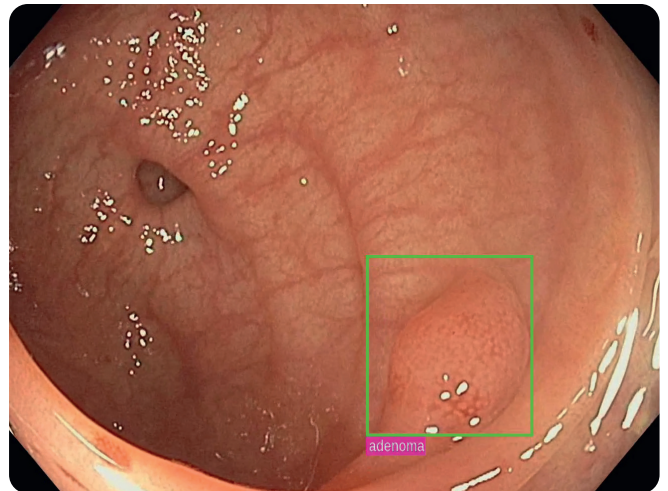
“The calculated adenoma miss rate in tandem colonoscopies has brought attention as a marker of error during endoscopic surveillance and diagnosis, with mean reported rates of 27% with conventional colonoscopy” ⁸

“Discovering more adenomas per exam may modify the classification of a patient’s risk of metachronous lesions” ⁹

Take your AI to the next level

Detecto works in synergy with Artificial Intelligence, extending the exposed surface of the intestinal membrane and optimising the detection of micro lesions found by the camera during the endoscopy.

“The combination of CADe and Mucosa-Exposure Device during colonoscopy increases adenoma detection rate and adenomas detected per colonoscopy” ¹⁰



The future approach to colorectal cancer screening

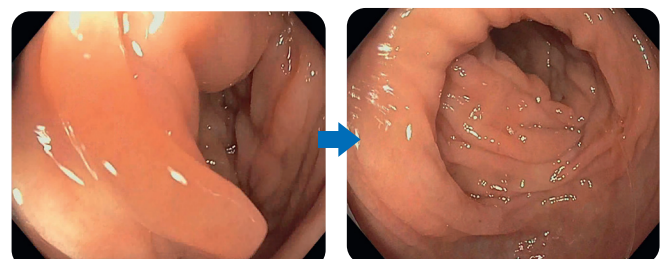
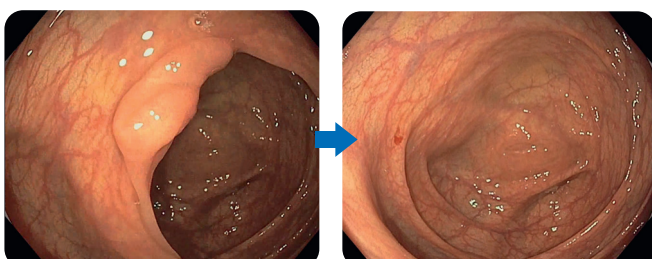
Examples of standard colonoscopy compared with colonoscopy performed using the Detecto distal cap.

without Detecto

with Detecto

without Detecto

with Detecto



Detecto

Distal Cap Information			
Commercial name	Code	Box	Endoscope diameter
Detecto	PRM01	50pcs	12,5 - 13,5 mm

DEVELOPED &
MANUFACTURED
IN ITALY



Patent Pending

References

- 1 Kaminski Michal F. et al. Performance measures for lower gastrointestinal endoscopy: a European Society of Gastrointestinal Endoscopy (ESGE) Quality Improvement Initiative. *Endoscopy*. 2017 Apr; 49(4):378-397
- 2 Douglas A. Corley, et al. Adenoma Detection Rate and Risk of Colorectal Cancer and Death. *N Engl J Med*. 2014 Apr 3; 370(14):1298-1306
- 3 Siew C. Ng, PhD1, Kelvin K.F. Tsoi et al. The efficacy of cap-assisted colonoscopy in polyp detection and cecal intubation: a meta-analysis of randomized controlled trials. *American Journal of Gastroenterology*. Aug 2012; 107(8):p 1165-1173
- 4 Nutalapati Venkat et al. Cap-assisted colonoscopy: a meta-analysis of high-quality randomized controlled trials. *Endoscopy International Open*. 2018; 06:E1214-E1223
- 5 C. Hassan, A. Repici, D. K. Rex. FITting ADR to colonoscopy indication. *United European Gastroenterol Journal*. 2017 Mar; 5(2):149-152
- 6 Douglas K. Rex et al. Colonoscopic Miss Rates of Adenomas Determined by Back-to-Back Colonoscopies. *Gastroenterology*. 1997; 112:24-28
- 7 Kaminski MF, Regula J, Kraszewska E et al. Quality indicators for colonoscopy and the risk of interval cancer. *NEJM*. 2010; 362:1795-1803
- 8 Castaneda D, Popov VB, et al. New technologies improve adenoma detection rate, adenoma miss rate and polyp detection rate: a systematic review and meta-analysis. *Gastrointestinal Endoscopy*. 2018
- 9 Atkin WS et al. European Guidelines for quality assurance in colorectal cancer screening and diagnosis. First Edition. *Colonoscopy surveillance following adenoma removal*. *Endoscopy*. 2012; 44:SE151-SE163
- 10 M. Spadaccini, C. Hassan, et al. Combination of Mucosa-Exposure Device and Computer-Aided Detection for Adenoma Detection During Colonoscopy: A Randomized Trial. *Gastroenterology*. 2023; 165:244-251



PRMEDICAL

PRMEDICAL SRL
Via Castellana 16/i, 30174 Venice Italy - VAT n. 04472360272
www.prmmedical.it - info@prmedical.it - +39 351 9206411